



LAND TO LAKE

magazine

issue 11 | autumn 2019 | landtolake.com

Great Lakes Region Sustainability

Residential Stormwater Management

St. Joseph River Watershed Initiative

CONNECTIONS

for a stronger, healthier, more vibrant **community**

EVENTS | NEWS

Fall 2019 - Winter 2020:

2



Take A Winter Hike

Northwest Ohio offers beautiful scenery in the winter months. Cure your cabin fever and take a hike at one of these natural areas:

Black Swamp Nature Preserve
753 Fairground Dr, Paulding, OH
pauldingswcd.org/black-swamp-nature-center/

Defiance Reservoir Trail
1261 Precision Way, Defiance, OH
Sledding hill and shelter houses along Kibble Road, West of the Reservoir

Independence Dam State Park
27722 State Route 424, Defiance, OH.
parks.ohiodnr.gov/independencedam



Get Outside Yourself

Metroparks Toledo offers hiking, educational programs and winter activities for all ages and interests.
metroparkstoleado.com

The Little River Wetlands Project in Ft. Wayne organizes public hikes and programs all year long, including:

Moonlit Ugly Sweater Hike Friday, December 13

6:00pm-7:30pm—Meet at the Eagle Marsh barn, sporting a headlamp and if you've got one, your best ugly sweater for a moonlit hike! Enjoy a great evening hike followed by warm drinks. Dress for the weather, rubber/winter boots and thick socks are recommended.

Short Hikes for Short Legs: The Life Cycle of a Snowflake Wednesday, January 15

9:00am-10:00am—Join us at the Eagle Marsh barn as we answer questions like, "Why does it snow?", "Why snow is white?", and more!



World Wetlands Day 2020 Saturday, February 1st

Celebrate the importance of wetlands and the vital role these habitats play in our watershed. Events throughout the day will include hikes, open houses, presentations, and a wetland seed propagation class.

For more info on these events and much more, visit: lrwp.org



LANDtoLAKE
magazine

Published to provide the community with information on protecting the water resources of the Maumee River Watershed throughout Defiance County.

EDITOR

Jennifer English

MS4 Coordinator, City of Defiance

DESIGN

Yvonne Dale

ydgraphics.com

PRINTING

Homewood Press

homewoodpress.com



Printed With
Wind-Generated
CLEAN ENERGY



30% PCW
Forestry Certified



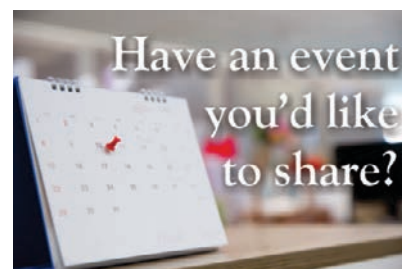
ECO-FRIENDLY
INKS



See current + previous magazine issues at landtolake.com



facebook.com/Land-to-Lake



Land to Lake supports outdoor, water-quality and conservation-related events in the region. Please submit details to jenglish@cityofdefiance.com



COVER PHOTO: Planet Earth: Great Lakes Region ©Anton Balazh
THIS PAGE: Red Cardinal ©Robert, Winter ©Patrick Daxenbichler,
Indiana Wetlands ©Rona Schwarz/Danita Delimont
| stock.adobe.com.

CONNECTIONS & TRANSFORMATIONS

Great Lakes Region SUSTAINABILITY

3



The City of Defiance participated in the **Global City Teams Challenge** hosted by **National Institute of Standards and Technology (NIST)** held in Washington DC this past July. At the Expo, community representatives and innovator partners shared how they are using technology to solve community and quality of life issues and improve rural health, agriculture, public safety and more. Pictured above, Jennifer English, Land to Lake and City MS4 Coordinator is conversing with Mark Fisher, President and CEO of Council of the Great Lakes Region (CGLR).

The City of Defiance and the Council of the Great Lakes Region have teamed together to form the **Great Lakes Smart, Sustainable Cities Regional Cluster** using innovation and shared resources to provide digital solutions for improving water quality. A series of demonstration projects to achieve nutrient reduction goals, located in the Maumee Watershed, will highlight our source water protection efforts.

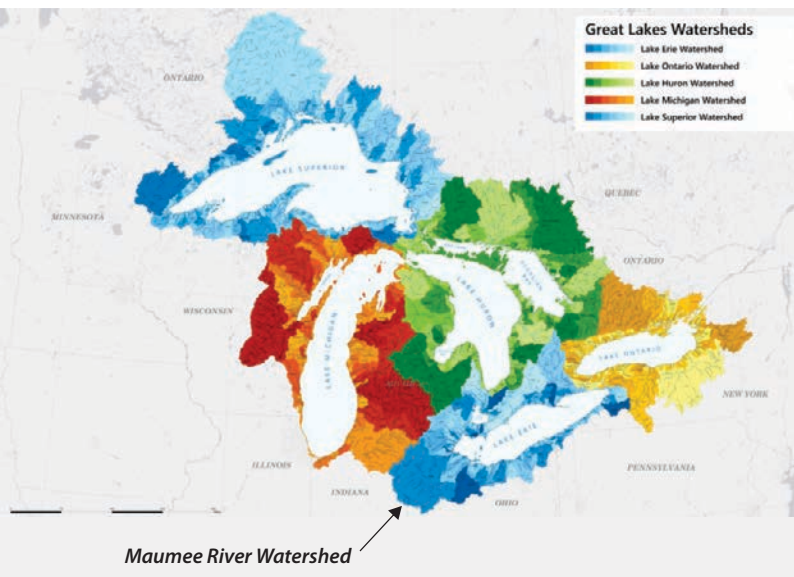
The “Cluster” is a collaborative effort to establish a smart infrastructure of digital technologies and rural broadband access in Northwest Ohio. By developing replicable, scalable demonstration projects, this approach provides opportunities to secure a prosperous future for agriculture in the region while protecting our drinking water. Together with our many partners we are finding new ways to harness the power of technology to implement sustainable water-quality solutions for the Maumee River Watershed.

About the Council of the Great Lakes Region

The Council of the Great Lakes Region is a binational nonprofit organization that is dedicated to deepening the United States-Canada relationship in the Great Lakes Region. Its focus is on creating a stronger and more dynamic culture of collaboration in harnessing the region's economic strengths and assets, improving the well-being and prosperity of the Region's citizens, and protecting the Great Lakes for future generations.

For more information, visit: councilgreatlakesregion.org

The Great Lakes Region, home to 107 million people, comprised of eight states and two provinces, would equal the third largest economy in the world if it were a country, supporting over 50 million U.S. and Canadian jobs. The City of Defiance is taking an active leadership role in watershed planning and other collaborative, sustainable development efforts throughout the region.



GREAT LAKES
SMART AND SUSTAINABLE CITIES

C G L R
COUNCIL OF THE GREAT LAKES REGION
BUILDING OUR FUTURE TODAY
Discover. Connect. Influence.

DEFIANCE
a great place to live

LAND TO LAKE
your local source for cleaner water

for more information, visit landtolake.com/sustainability

In And Around Defiance

CONNECTIONS

for a stronger, healthier, more vibrant community



The new boardwalk, connecting the Reservoir Trail, was completed and officially opened in September 2019. A team of dedicated individuals from the City and the community worked diligently for several years to bring this project to completion.



trails

Provide Essential Infrastructure

Multi-use trails are an important aspect of a community's quality of life, providing many benefits, including:

Connectivity

Trails provide easy access to nature and the outdoors. They are safe, convenient, enjoyable places where residents can walk, bike, and interact with others.

Health and Safety

Trails are traffic-free, low-stress environments which encourages people of all ages and abilities to become more active

Economic Development

Communities with good trail systems are in high demand. Small towns have redeveloped and found increased vitality around trails.

Defiance is a Buckeye Trail Town, connecting hikers all around the state of Ohio.



visitdefianceohio.com/maps-trails

Summarized from: Ways Multi-Use Trails Transform Communities, meetingoftheminds.org

The Defiance County Health Department and the Maumee Valley Planning Organization are developing a *Defiance County Active Transportation Plan* to support increased walking, bicycling, and other active modes of transportation. Watch for details in the Spring 2020 issue of *Land to Lake* magazine.

PHOTOS: Aerial View of Boardwalk Trail © Williams Aerial; Trail Ribbon Cutting © Debbie Stevens; Trail access from Precision Drive © Jennifer English; Confluence © Mike Miller; Park sign © ydgraphics; Spring flowering trees © Debbie Stevens.



rivers

Are The Heart of Defiance

Defiance is a River Town. Our rivers provide drinking water, recreation, natural habitat, and have been a gathering place for centuries.

The City of Defiance has planned and implemented several riverfront projects to provide for restoration, enhancement and development, and increased recreational use.



In July 2019 the third annual RiverFest was held at Kingsbury Park where kids of all ages enjoyed nature-based River Passport activities, swimming at Kingsbury pool and free kayaking at the confluence. RiverFest is held annually to promote recreation on the Maumee River and help people connect to nature and to each other.

This year's event was hosted by the City of Defiance, the Defiance Development and Visitors Bureau, Defiance Soil and Water Conservation District and Land to Lake.



parks

Are Good Medicine

Studies have shown the following:

- Living near green spaces reduces mortality even when adjusted for socio-demographic factors.
- Enjoying time in a park by taking a walk or relaxing outdoors influenced healthier behaviors, including eating healthier and less food afterwards.
- Contact with nature improves immune function, and contributes to the general health of adults, children, and cancer survivors.
- Viewing and spending time in nature lowers cortisol and blood pressure and is linked with lowering levels of stress, depression, anxiety, and aggression.
- Access to parks is a social equalizer, benefiting health and wellbeing over the course of one's life.

Summary from: Healthy Parks Healthy People, 2018-2023 Strategic Plan, US Department of the Interior, National Park Service, June 2018.

The City Parks Division is dedicated to the management and improvement of over a dozen beautiful parks throughout Defiance.

The City Park Board and the Shade Tree Commission each hold regular meetings, open to the public. For More Info Call 419.782.2240.



trees

Add Value To A Community

Trees and green spaces directly correlate to greater connections to neighbors. Healthy urban forestry programs provide substantial benefits to communities:

- **Reduce costs** for energy, stormwater management, and erosion control.
- **Cut energy consumption** by up to 25%.
- **Boost property values** throughout the community.

www.arboday.org/programs/treecityusa

The City of Defiance established a Tree Commission in 1979 to support the planting and maintenance of trees on property owned or maintained by the City. The Tree Commission follows Tree City USA core standards and works to enhance urban forest management through improved ordinances, programs and emphasis on planting and care of City trees.

The City of Defiance maintains its status as a Tree City USA, and achieves annual growth awards through the efforts of the Tree Commission and the Parks Division.



TREE CITY USA®

Residential Stormwater Management

6

While the City of Defiance has worked for many years, at great expense, to separate and replace sewer lines, there are still several combined sewers throughout our community.

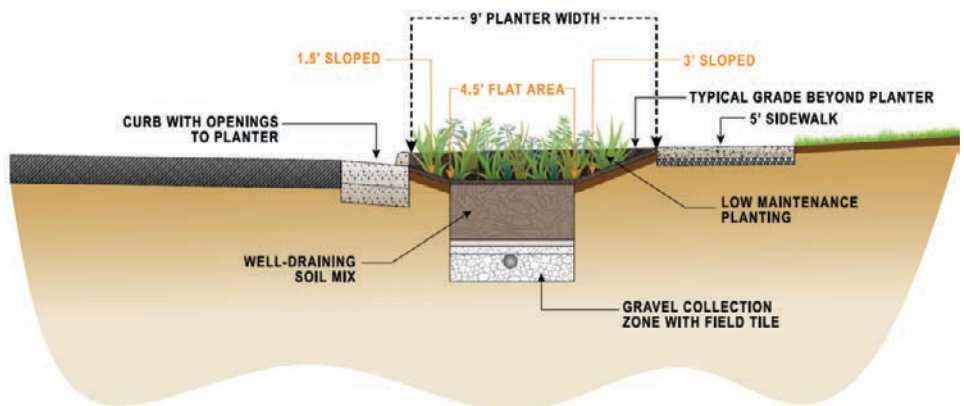
Combined Sewer Overflows (CSOs) occur when heavy rains overload the system and storm water—combined with waste water—is discharged directly into the river. The City has taken a proactive approach to Stormwater Management by implementing green infrastructure projects to handle Stormwater at a cost much lower than that of sewer replacement.



SLOW IT DOWN, SPREAD IT OUT, SOAK IT IN.

The reconstruction of E. High Street was funded through Ohio Public Works Commission (OPWC) and local funds. The project includes new sidewalk, lighting, street trees, sewer rehabilitation, and storm water components engineered to capture, store and filter rainwater that formerly drained into city sewers.

Rain gardens integrated into the sidewalk design along E. High street are planted with a selection of deep-rooted native plants to absorb rain water, filter out impurities and prevent run-off from entering the river.



TYPICAL PLANTER DETAIL

The City of Defiance Stormwater Division is responsible for implementing a Storm Water Management Program (SWMP) in accordance with Ohio EPA NPDES Small MS4 General Permit. The plan covers all publicly-owned systems for conveying storm water and includes City infrastructure as well as natural drainage.

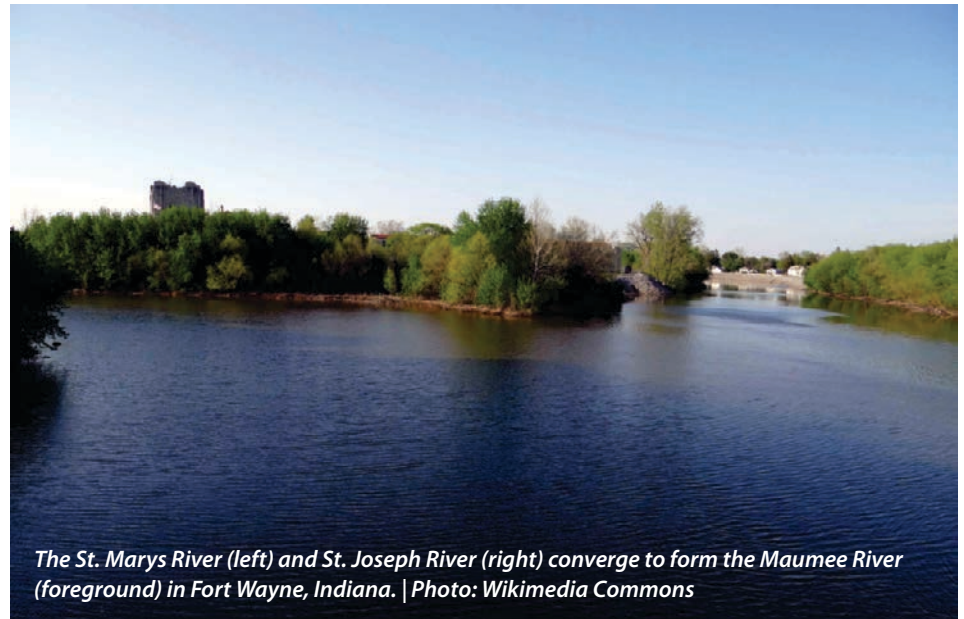
Organizations Working To Improve Water Quality



The St. Joseph River Watershed Initiative, a non-profit partnership, exists to protect, restore and enjoy the St. Joseph River and its watershed. Since its inception in 1996, the Initiative has met its goals and is emulated by other watershed projects throughout the country.

The St. Joseph River is the source of drinking water for more than 300,000 people in Fort Wayne, and important as a habitat, a recreational resource, a drainage channel and a source of economic growth in the region. The Watershed Initiative is committed to protecting water quality in the river while promoting economically and environmentally compatible land uses.

The Initiative partners with state, county, and municipal governments,



The St. Marys River (left) and St. Joseph River (right) converge to form the Maumee River (foreground) in Fort Wayne, Indiana. | Photo: Wikimedia Commons

conservation agencies, land-owners, educational institutions and other entities to further its mission and goals. The Initiative's three main priorities include maintaining a robust **water quality sampling program** and making results available through the Water Quality Information System (WQIS) emerald.pfw.edu/WQIS; conducting **education and outreach activities** throughout the watershed;

and **implementing conservation practices** based on watershed management plans. Over the past 20 years, the Initiative has been able to bring more than \$3 million in grant funds into the watershed to help further these goals.

To find out how you can participate in the Initiative or learn more about the communities in the watershed, visit sjrwi.org

Geographic Scope

The St. Joseph River watershed is expansive covering more than 694,000 acres in three states and six counties. Stretching from the headwaters in south central Michigan, through northwest Ohio and ending in Fort Wayne in northeastern Indiana, the St. Joe encompasses crop and pasture lands, woodlands and wetlands, farmsteads, urban areas and rural residences.



The Maumee River Watershed is the largest in the Great Lakes Region, with 85% of the drainage passing through Defiance, Ohio.

ST. JOSEPH RIVER WATERSHED INITIATIVE

invites you to celebrate

"A River for All Seasons"
Annual Meeting Dinner and Program

Thursday, December 5, 2019
beginning at 6:00 PM

Salomon Farm Park—Learning Center
817 Dupont Road, Fort Wayne, Indiana

Tickets are \$20 and may be purchased via
Eventbrite link at www.sjrwi.org

For more information, call 260-341-6344.

RIVER SUMMIT III



Maumee
Watershed
Alliance

partnerships for healthy rivers

Spring 2020

The Maumee River Watershed is the largest in the Great Lakes Region. The communities here have the ability to make a significant impact on the quality of the water in Lake Erie.

Join us for discovery and discussion on how we can work together to enhance quality of life, improve economic viability, and create sustainable water-quality solutions for the Maumee River Watershed.

Visit LandToLake.com for information on Summit dates, topics, tickets and more. Sign-up for Email notifications to receive the latest information.