

Capitalizing on the Rivers



Fort Defiance - Confluence



2030 Land Use & Strategic Plan





Create More Access & Visibility to Rivers

- Cleaning Out the Rivers
- Shoreline Protection Measures
- Emphasize Confluence as Focal Point
- Provide Public Access to Rivers
- Provide Restroom Facilities at Riverfront
- Mention of Amphitheater Development
- Pursue Extension of Walkways
- Recruit More Organizations to Use the Rivers



Enhance Quality of Life Factors

- Balance Future Development with Protection of Unique Environmental Attributes
- Protect Flood Plain Areas and Connect with Existing Parks, Walkways, Bike Paths and Water Uses
- Implement Conservation Easements Where Needed
- Prepare Corridor Plan for Rivers and Confluence Area

Kingsbury Park – FEMA Project



Park Improvements



Riparian Vegetation Management

- Create More Visibility and Lookout Points
- Remove Invasive Species
- Replant Native Species with Bioengineering Capacity
- Using Hard Armor (ROCK) Only Where Required

Auglaize Riverbank Stabilization

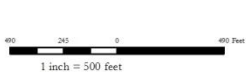


Auglaize Riparian Restoration



Reservoir Bike & Walking Trail

- Statewide Buckeye Trail Connection
- Multi-Use Asphalt Trail Around Base of Reservoir
- Sidewalk Connections to Adjacent Neighborhoods
- Canal Walkway Phase 1 –Connection to Downtown



City of Defiance Municipal Reservoir Master Plan

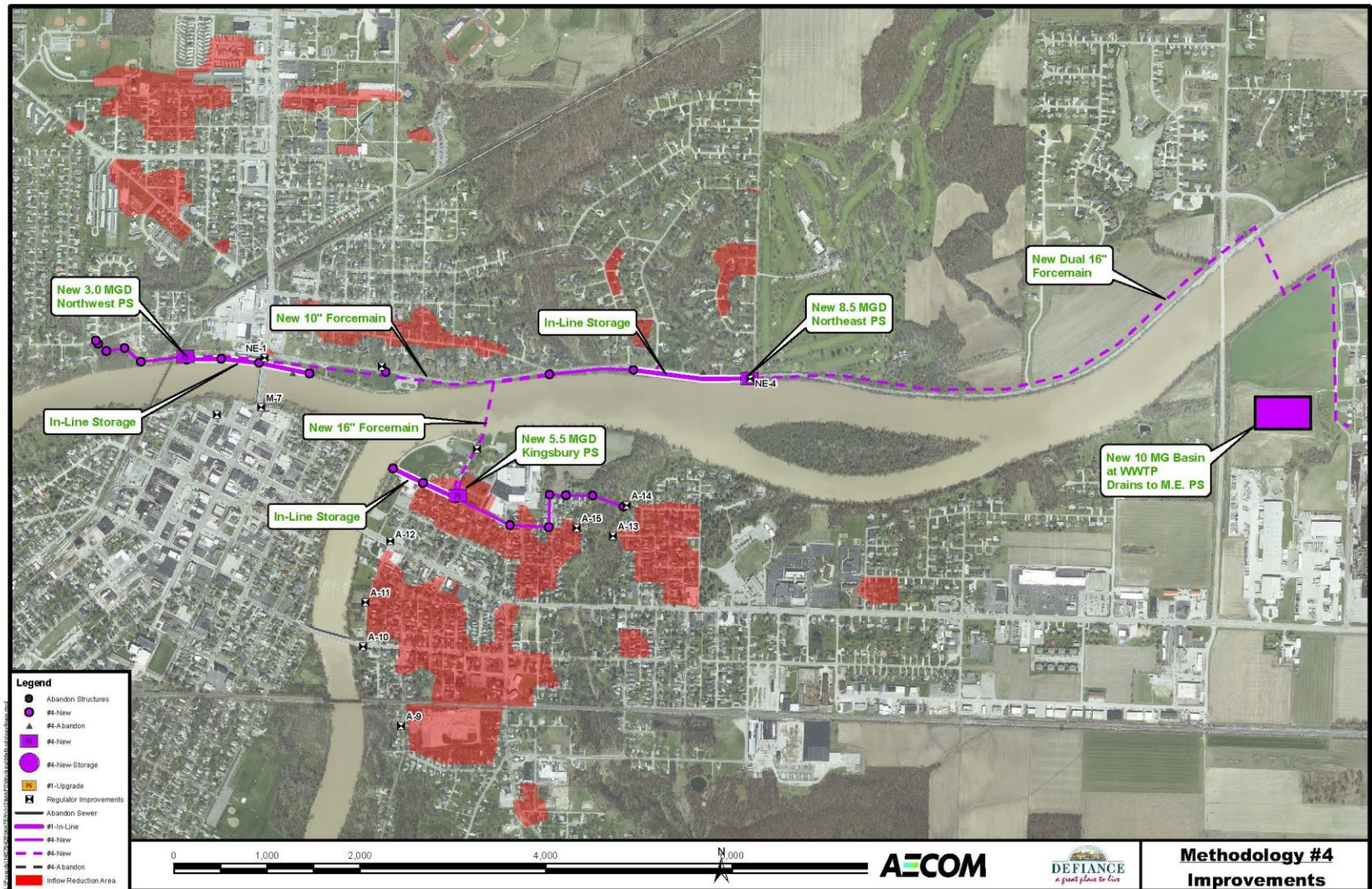
Long Term Control Plan



Concept Plan for LTCP

- Integrated Planning Process
- Incorporate Green Infrastructure in Select Areas
- Inflow Reduction: Removal of Stormwater
- Large Infrastructure: Comprehensive Benefits

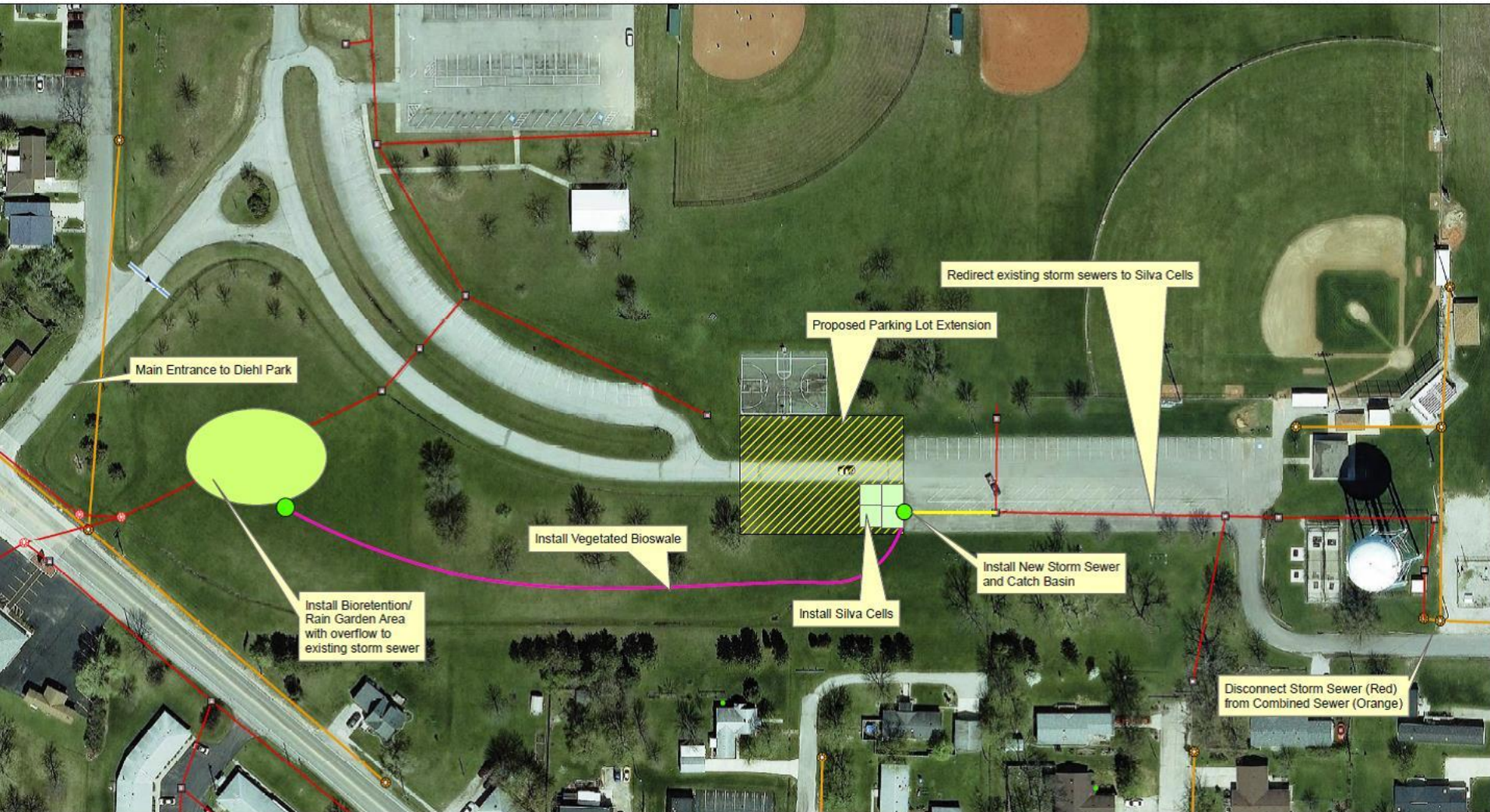
Concept Plan for LTCP



Diehl Park Bioretention

- OEPA Funding: Surface Water Improvement Fund
- Demonstration Project for Green Infrastructure
“Low-Hanging Fruit”
- Provides CSO Relief, Improvement to Park Aesthetics

Diehl Park Bioretention



Public Works Projects



Perry Street Parking Lot



Bioretention at City Hall



Rain Garden at Municipal Court

